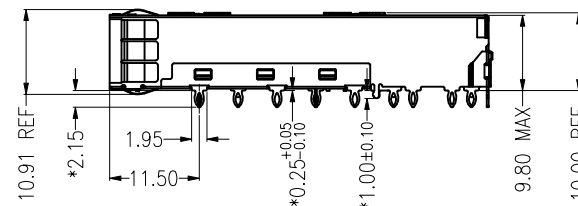
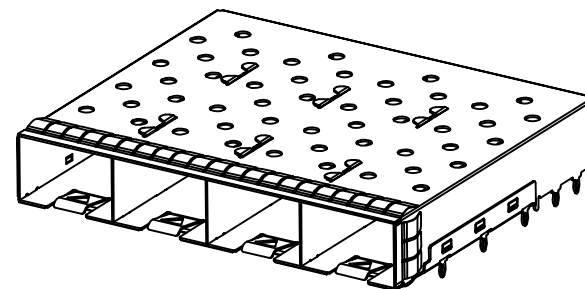
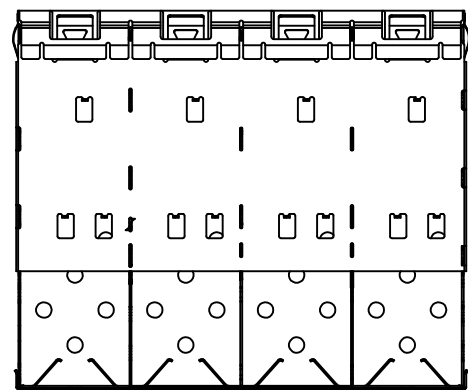
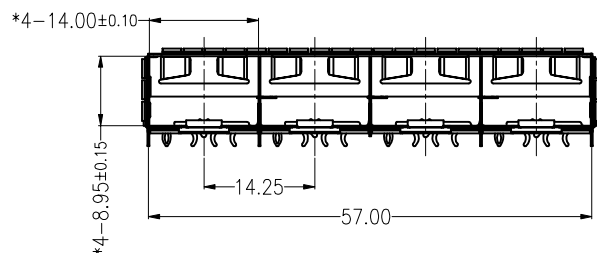
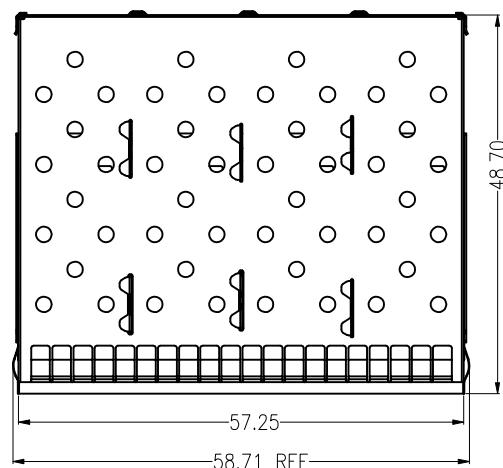


Customer drawings



NOTE:

1, DESCRIPTION	Q'ty	MATERIAL	PLATING
SFP TOP CAGE	1PCS	COPPER ALLOY T=0.25	N/A
SFP BOTTOM CAGE	1PCS	COPPER ALLOY T=0.25	N/A
SFP MID CAGE	3PCS	COPPER ALLOY T=0.25	N/A
SFP KICKOUT SPRING	1PCS	COPPER ALLOY T=0.25	N/A
SFP EMI CLIP	4PCS	COPPER ALLOY T=0.08	TIN PLATE OVER NICKEL

2, TEMPERATURE:

OPERATION: -40°C~+85°C  
STORAGE: -55°C~+105°C

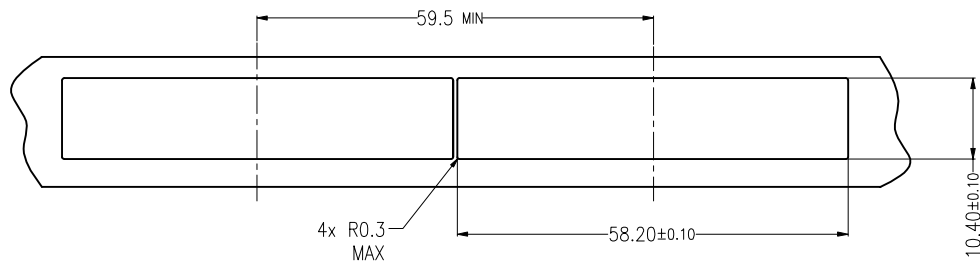
B	刷新图画	/	Shmily
A	NEW	/	Shmily
版次	修改说明	ECN 编号	核准

自由公差		设计	
长度尺寸	角度尺寸		
X. ±0.25	X. ±0.5°	Vita	2019.11.24
.X ±0.25	.X ±0.5°	审核	
.XX ±0.20	.XX ±0.5°	Carry	2019.11.24
.XXX ±0.15	.XXX ±0.5°	核准	
单位 mm	比例 1:1	Shmily	2019.11.24
A4	页次 1 of 3		

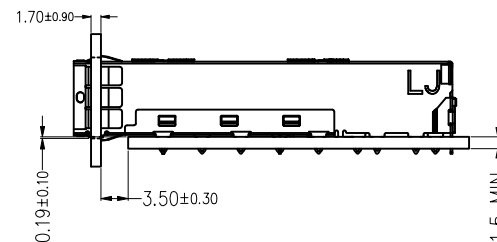
苏州沃虎电子科技有限公司  
SUZHOU WOHU ELECTRONIC TECHNOLOGY CO.,LTD

品名	SFP+ 1x4 CAGE
料号	81-114-00011-1
图号	ESFP15042102-C
版本	B

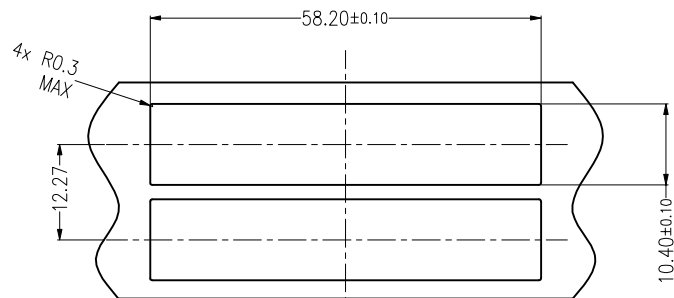
Customer drawings



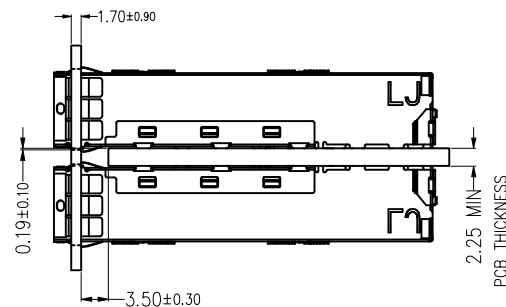
RECOMMENDED BEZEL CUT-OUT SINGLE SIDED APPLICATIONS



MOUNTED ON PC BOARD  
SHOWN THRU RECOMMENDED BEZEL



RECOMMENDED BEZEL CUT-OUT BELLY TO BELLY APPLICATIONS



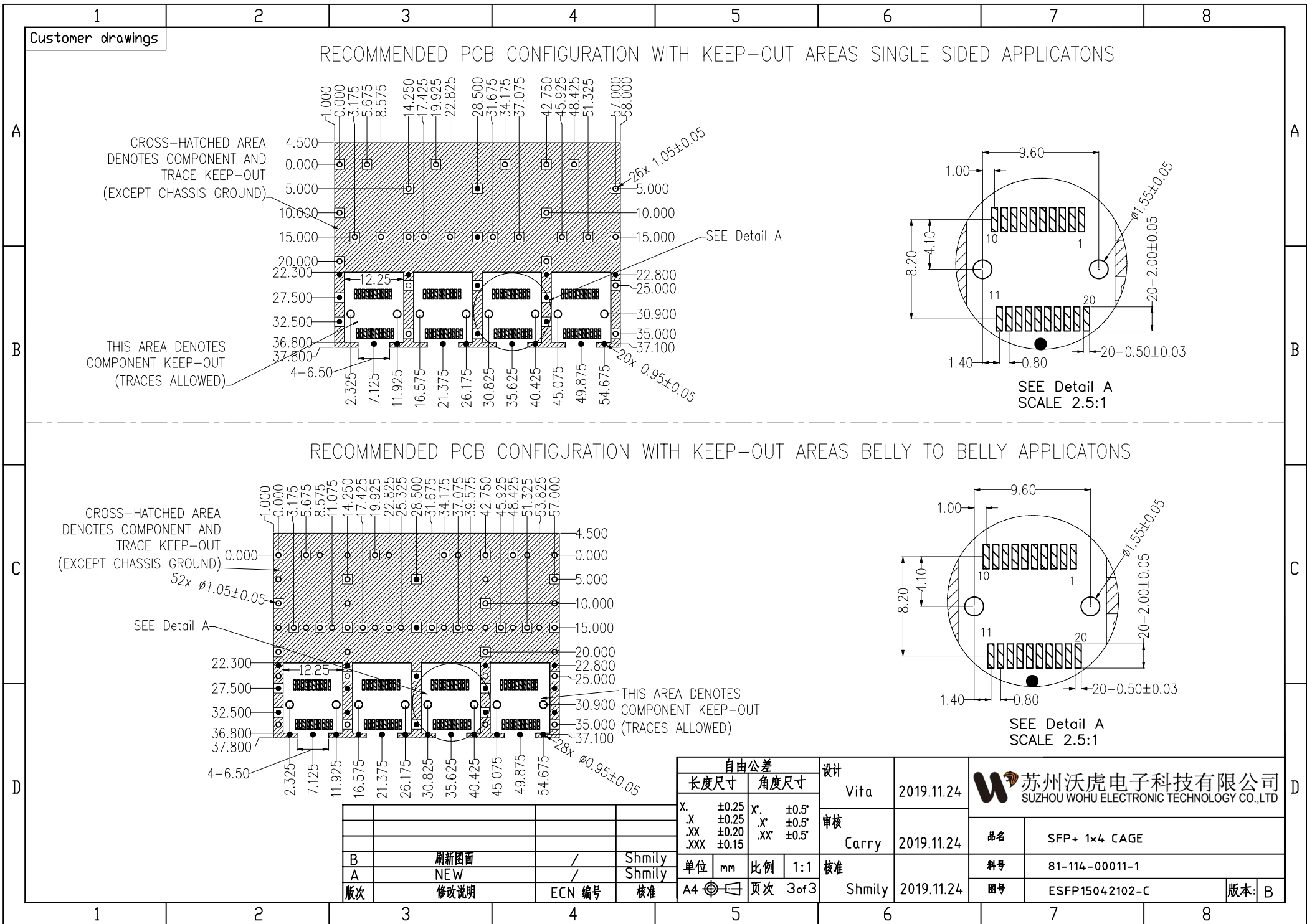
MOUNTED BELLY TO BELLY ON PC BOARD  
SHOWN THRU RECOMMENDED BEZEL

B	刷新图画	/	Shmily	
A	NEW	/	Shmily	
版次	修改说明	ECN 编号	核准	

自由公差		设计	
长度尺寸	角度尺寸	Vita	2019.11.24
X. ±0.25	X°. ±0.5°	审核	
.X ±0.25	.X° ±0.5°	Carry	2019.11.24
.XX ±0.20	.XX° ±0.5°	核准	
.XXX ±0.15		Shmily	2019.11.24
单位 mm	比例 1:1		
A4	页次 2 of 3		

 苏州沃虎电子科技有限公司  
SUZHOU WOHU ELECTRONIC TECHNOLOGY CO.,LTD

品名	SFP+ 1x4 CAGE
料号	81-114-00011-1
图号	ESFP15042102-C
版本:	B



B	刷新图画	/		Shmily	
A	NEW	/		Shmily	
版次	修改说明	ECN 编号		核准	

自由公差			
长度尺寸	角度尺寸	设计	
x. ±0.25	x'. ±0.5°	Vita	2019.11.24
.X ±0.25	.X' ±0.5°	审核	
.XX ±0.20	.XX' ±0.5°	Carry	2019.11.24
.XXX ±0.15		核准	
单位	mm	比例	1:1
A4	⊕	页次	3 of 3

设计		Vita		2019.11.24	
审核		Carry		2019.11.24	
核准		Shmily		2019.11.24	
品名		SFP+ 1x4 CAGE			
料号		81-114-00011-1			
图号		ESFP15042102-C			
版本		B			

