

经纬达科技
JWD TECHNOLOGY



AEC-Q200



IATF16949



RoHS COMPLIANT

SPER32SOXA SERIES

PLANAR TRANSFORMER

Features And Benefits:

- Multilayer PCB For Transformer Winding
- High Consistency And Efficiency
- Low Profile, High Reliability
- Winding Structure : PCB Up To 24 Layers
- Typical Efficiency : 95% ~ 99%
- Typical Topology : Forward/Flyback/Buck/Full Bridge/Half Bridge

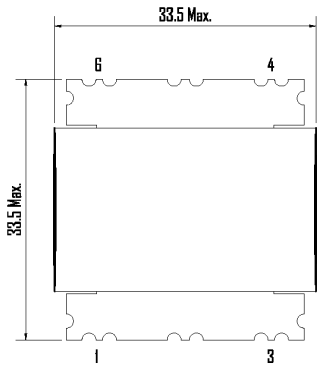
Electrical Specifications

Part Number	Mech. Drawing	Topology	Turns Ratio Pri:Sec	Pri Inductance (uH)	LK Inductance Max (uH)	DCR Max (mΩ)		HI-Pot
						Pri.	Sec.	
SPER32SO1A	D Type	Full bridge	3:1	48±25%	0.05	2.5	0.3	1500Vrms
SPER32SO2A	D Type	Full bridge	3:2	48±25%	0.05	2.5	0.6	1500Vrms
SPER32SO3A	D Type	Full bridge	3:5	48±25%	0.05	2.5	5.5	1500Vrms
SPER32SO4A	D Type	Full bridge	4:4	85±25%	0.05	3.5	3.5	1500Vrms
SPER32SO5A	D Type	Full bridge	4:6	85±25%	0.08	3.5	5.5	1500Vrms
SPER32SO6A	D Type	Full bridge	5:2	132±25%	0.08	4.5	0.6	1500Vrms
SPER32SO7A	D Type	Full bridge	5:4	132±25%	0.08	4.5	2.5	1500Vrms

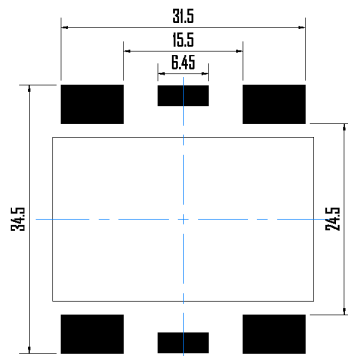
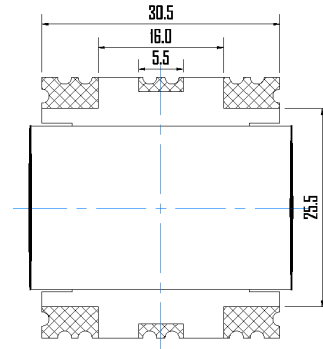
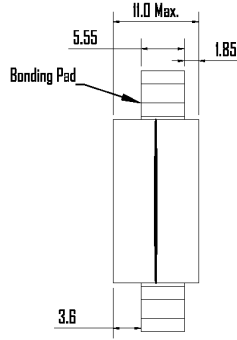
NOTES:

- All Test Data Is Referenced To 25°C Ambient
- Inductance Measured At 100kHz,0.IV

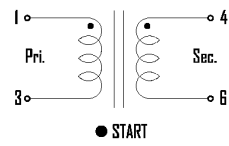
A Type



Dimensions (Unit:mm)



Suggested PAD Layout



Schematics