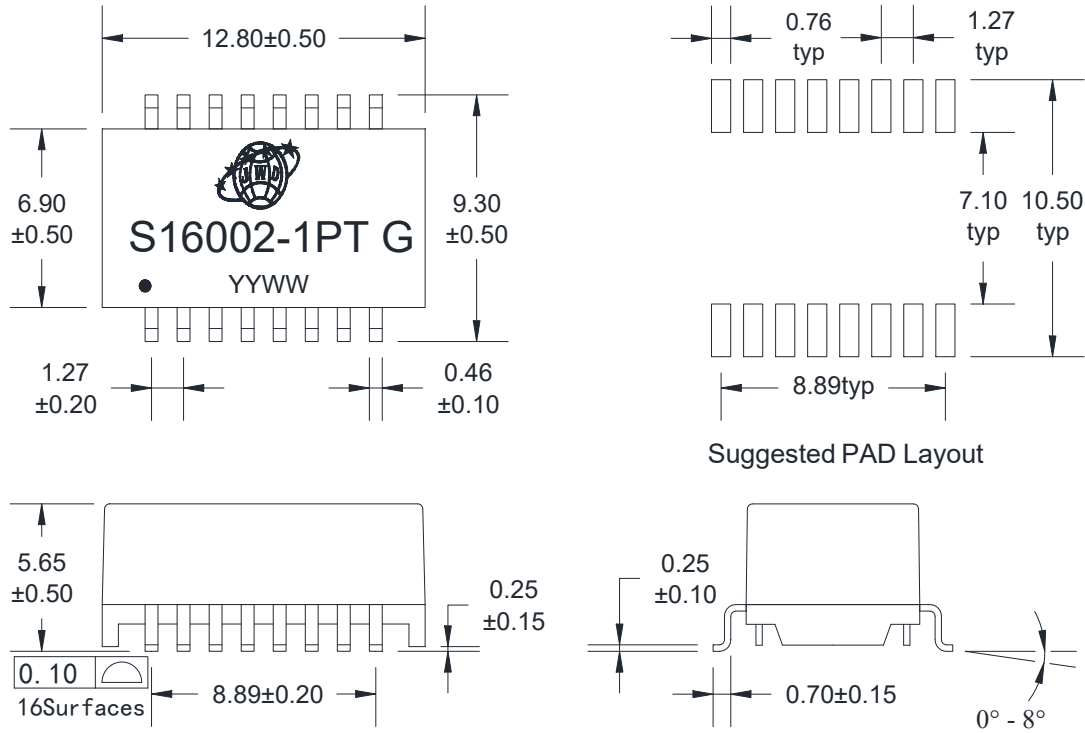




四川经纬达科技集团有限公司

Sichuan Jingweida Technology Group Co., Ltd

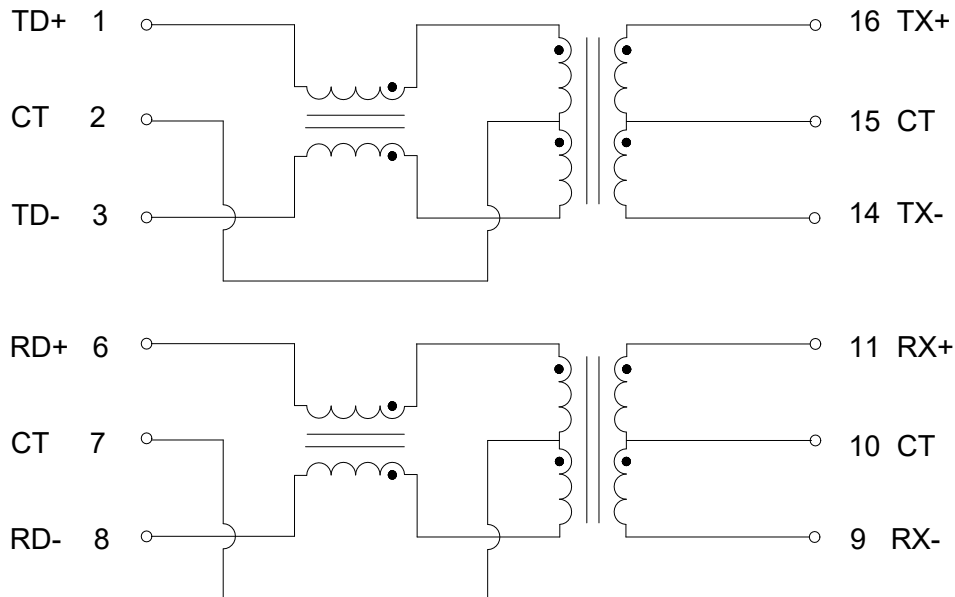
A. MECHANICAL (unit:mm)



B. SCHEMATICS

Chip Side

Cable Side



DESCRIPTION	JWD P/N	SPEC NO	REV: R0
10/100 BASE-TX	S16002-1PT G	JWD-L-22231	PAGE: 2/5



四川经纬达科技集团有限公司

Sichuan Jingweida Technology Group Co., Ltd

C. ELECTRICAL SPECIFICATIONS @25°C

1. OCL: 350 uH Min @ 100KHz, 0.1V with 8mA DC BIAS
2. Leakage Inductance: 0.5uH Max @ 100KHz, 0.1V
3. DCR: 1400mΩ Max
4. Turns Ratio: 1CT:1CT±5%
5. Insertion Loss: -1.2 dB Max @ 0.5-1 MHz
-0.2-0.002*f^{1.4} dB Max @ 1-125 MHz
6. Return Loss: -16 dB Min @ 1-40 MHz
-10+20*log (f/80) dB Min @ 40.1-100 MHz
7. Cross Talk: -30 dB Min @ 1-100 MHz
8. Common Mode Rejection: -30 dB Min @ 1-100 MHz
9. Isolation Hipot: 1500VAC 1mA 60S
10. Operating temperature -40°C to +85°C
11. Storage temperature -40°C to +85°C
12. Compliant with PoE 30W---Each channel support 720mA DC balance current

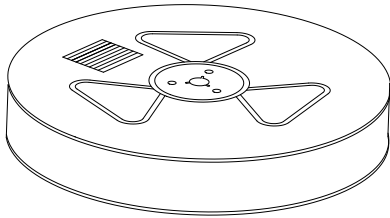
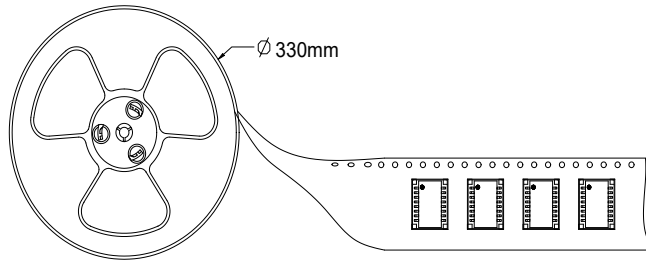
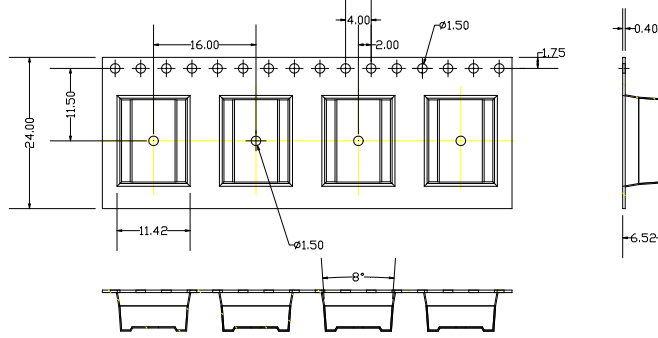
DESCRIPTION	JWD P/N	SPEC NO	REV: R0
10/100 BASE-TX	S16002-1PT G	JWD-L-22231	PAGE: 3/5



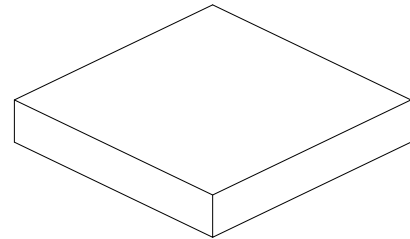
四川经纬达科技集团有限公司

Sichuan Jingweida Technology Group Co., Ltd

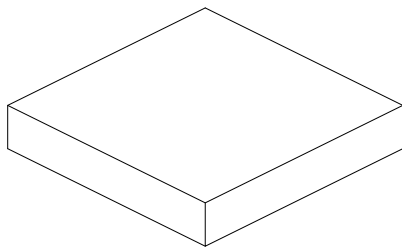
D. PACKAGE INFORMATION



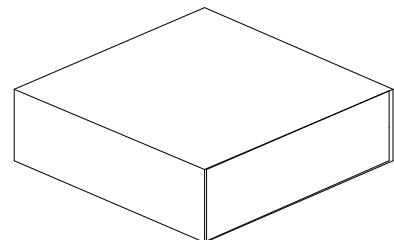
Three reel



Inner Carton



Two Inner Carton



Export Carton

Package Quantity:

One Reel=600Pcs

One Inner Carton=600*3=1800Pcs

One Export Carton=1800*2=3600Pcs

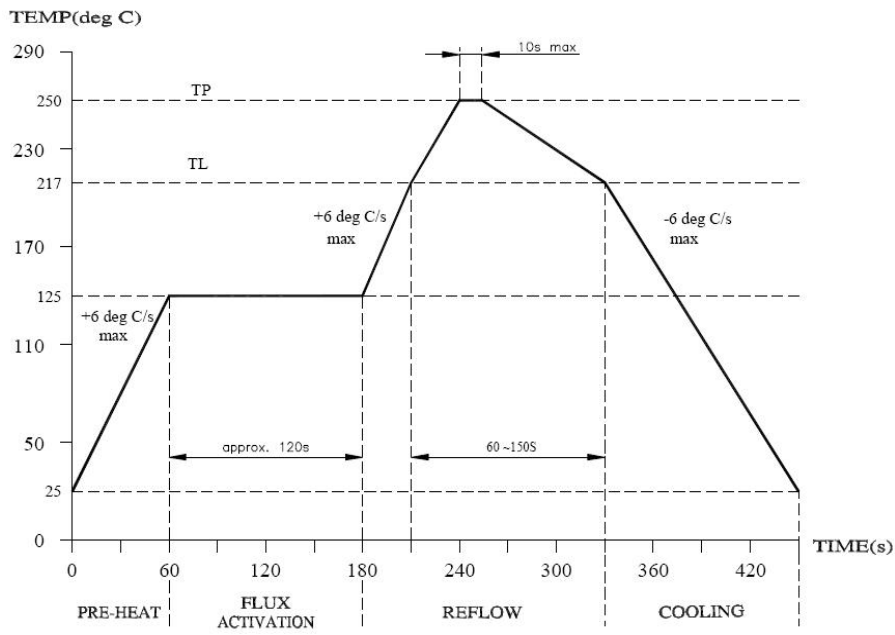
DESCRIPTION	JWD P/N	SPEC NO	REV: R0
10/100 BASE-TX	S16002-1PT G	JWD-L-22231	PAGE: 4/5



四川经纬达科技集团有限公司

Sichuan Jingweida Technology Group Co., Ltd

E. RECOMMEND REFLOW SOLDERING CURVE



DESCRIPTION	JWD P/N	SPEC NO.	REV: R0
10/100 BASE-TX	S16002-1PT G	JWD-L-22231	PAGE: 5/5