

SC02

NOTE:

MATERIAL:

1. CONTACT: PHOSPHOR BRONZE.
2. CONNECTOR HOUSING: LCP UL 94V-0. COLOR: BLACK.
3. MOULDED INSERT: HIGH TEMPERATURE PLASTIC UL 94V-0. COLOR:BLACK.
4. CAGE: COPPER ALLOY.
5. LIGHT PIPES: POLYCARBONATE. UL 94V-0. COLOR:CLEAR
6. LIGHT PIPE HOUSING: PBT UL 94V-0 COLOR:BLACK.

PLATED:

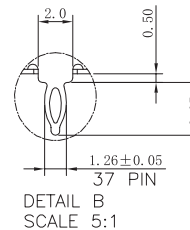
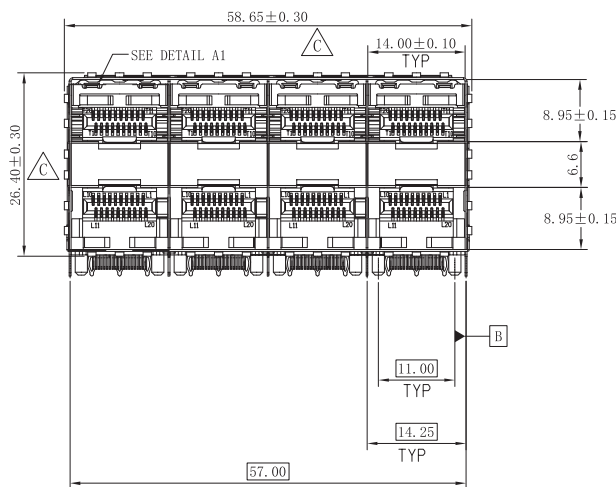
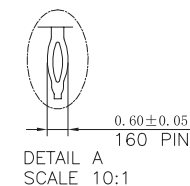
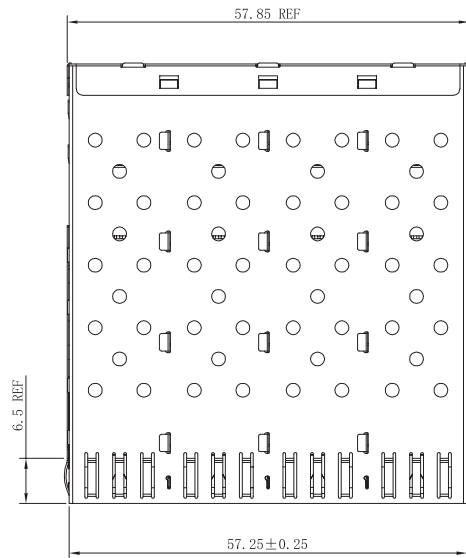
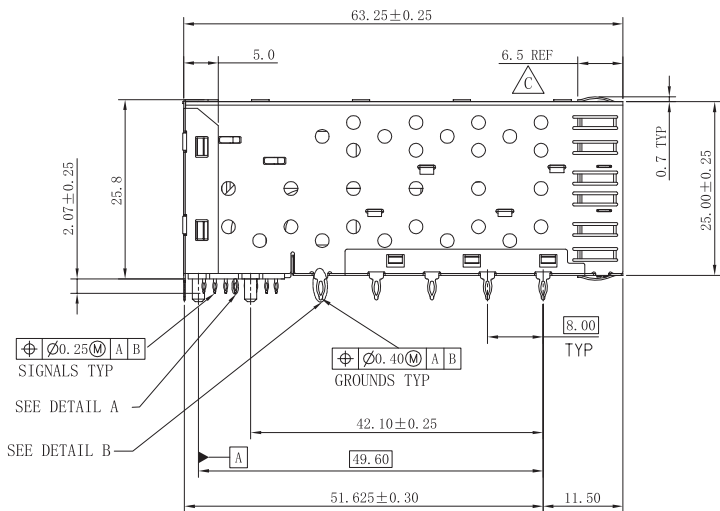
1. CONTACT MATING AREA : PLATING GOLD OVER 1.27 MICROMETERS MINIMUM NICKEL.
2. CONTACT NEEDLE EYE: 2.54 MICROMETERS MINIMUM MATTE TIN OVER 1.27 MICROMETERS MINIMUM NICKEL.

MECHANICAL REQUIREMENT:

1. DURABILITY: 100 CYCLES MIN.
2. INSERTION AND EXTRACTION FORCE: 40N MAX & 11.5N MAX

ENVIRONMENTAL:

1. LOW LEVEL CONTACT RESITANCE(LLCR):  
ΔR 10 MILLIOHMS MAXIMUM FOR SHIELD AND SIGNAL CONTACTS.
2. DIELECTRIC WITHSTANDING VOLTAGE: 300V AC/MAX.
3. INSULATION RESISTANCE:  $1 \times 10^9$  OHMS MINIMUM.
4. RATINGS CURRENT: 0.5 AMPS MAX.
5. RATINGS VOLTAGE: 30 VOLTS DC/AC(RMS) MAX.
6. OPERATION:  $-40^{\circ}\text{C} \sim +85^{\circ}\text{C}$ .
7. STORAGE:  $-55^{\circ}\text{C} \sim +105^{\circ}\text{C}$ .
8. ROHS COMPLIANT



RoHS Compliant

**VOOHU** 苏州沃虎电子科技有限公司  
Su Zhou Voohu Electronic Tech.Co.Ltd

TITLE:  
SFP 2X4 CONNECTOR

SIZE  
A4

UNITS  
MM[INCH]

GENERAL TOLERANCES  
UNLESS SPECIFIED

APPROVED BY:  
Geoffrey.Song

PART NO.:  
WH10705524D007

SACLE  
1:1

REV  
A0

$x \pm 0.35$   
 $.x \pm 0.30$

$x^{\circ} \pm 3.0^{\circ}$   
 $.x^{\circ} \pm 2.0^{\circ}$

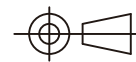
CHECKED BY:  
Elvis.Song

TEL: +86 400 1048 018

WEB: [WWW.WOHU-TEK.COM](http://WWW.WOHU-TEK.COM)

REMARK:  
GOLD PALTING 15u"

SHEET  
1/4

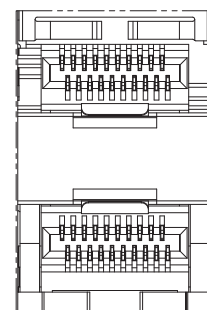
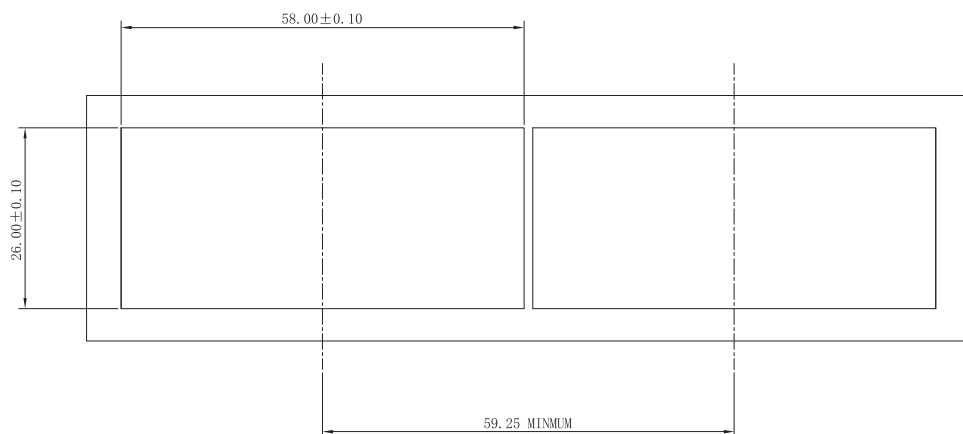


$.xx \pm 0.25$   
 $.xxx \pm 0.10$

$.xx^{\circ} \pm 1.5^{\circ}$   
 $.xxx^{\circ} \pm 1.0^{\circ}$

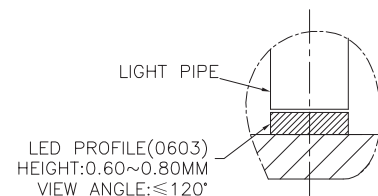
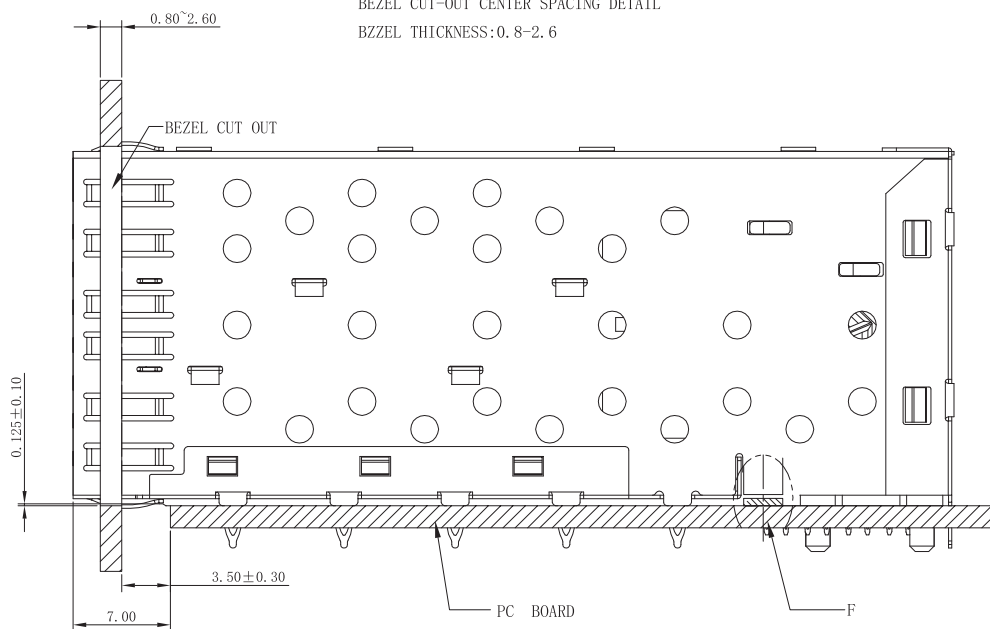
DESIGND BY:  
Sunny.Xu

SC02



TYPE1\_NONE LIGHT PIPES

BEZEL CUT-OUT CENTER SPACING DETAIL  
 BZZEL THICKNESS:0.8-2.6



DETAIL F  
 SCALE 4:1

RoHS Compliant

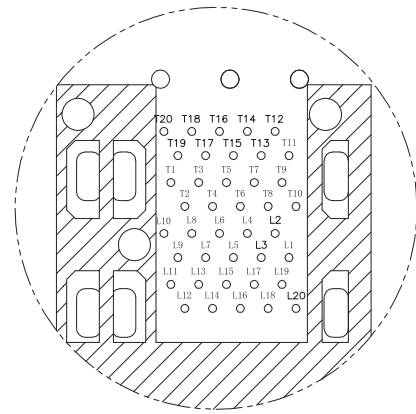
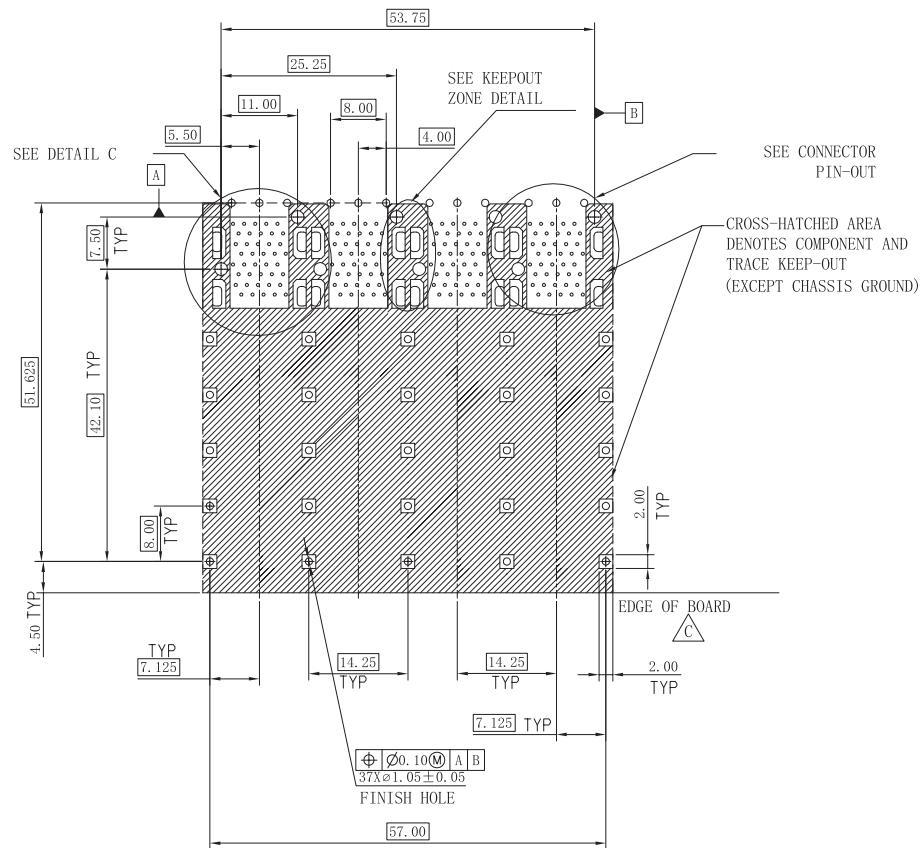
**VOOHU** 苏州沃虎电子科技有限公司  
 Su Zhou Voohu Electronic Tech.Co.Ltd

TITLE: SFP 2X4 CONNECTOR	SIZE A4	UNITS MM[INCH]	GENERAL TOLERANCES UNLESS SPECIFIED		APPROVED BY: Geoffrey.Song
PART NO.: WH10705524D007	SACLE 1:1	REV A0	$x \pm 0.35$	$x^\circ \pm 3.0^\circ$	CHECKED BY: Elvis.Song
REMARK: GOLD PALTING 15u"	SHEET 2/4		$.xx \pm 0.25$	$.xx^\circ \pm 1.5^\circ$	DESIGND BY: Sunny.Xu
			$.xxx \pm 0.10$	$.xxx^\circ \pm 1.0^\circ$	

TEL: +86 400 1048 018

WEB: [WWW.WOHU-TEK.COM](http://WWW.WOHU-TEK.COM)

SC02



CONNECTOR PIN-OUT  
COMPONENT SIDE OF BOARD

RECOMMENDED PCB LAYOUT—COMPONENT SIDE  
RECOMMENDED PCB THICKNESS—2.63MM

THE ENTIRE AREA OF THE CONNECTOR FOOTPRINT  
TO BE CONSIDERED THE KEEP OUT AREA FOR COMPONENTS  
(OTHER THAN LIGHT PIPE LED'S)  
THIS AREA IS INDICATED BY THE DASHED LINE

RoHS Compliant

**VOOHU** 苏州沃虎电子科技有限公司  
Su Zhou Voohu Electronic Tech.Co.Ltd

TITLE:  
SFP 2X4 CONNECTOR

SIZE  
A4  
UNITS  
MM[INCH]

GENERAL TOLERANCES  
UNLESS SPECIFIED

APPROVED BY:  
Geoffrey.Song

PART NO.:  
WH10705524D007

SACLE  
1:1

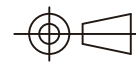
REV  
A0

$x \pm 0.35$   
 $.x \pm 0.30$

CHECKED BY:  
Elvis.Song

REMARK:  
GOLD PALTING 15u"

SHEET  
3/4



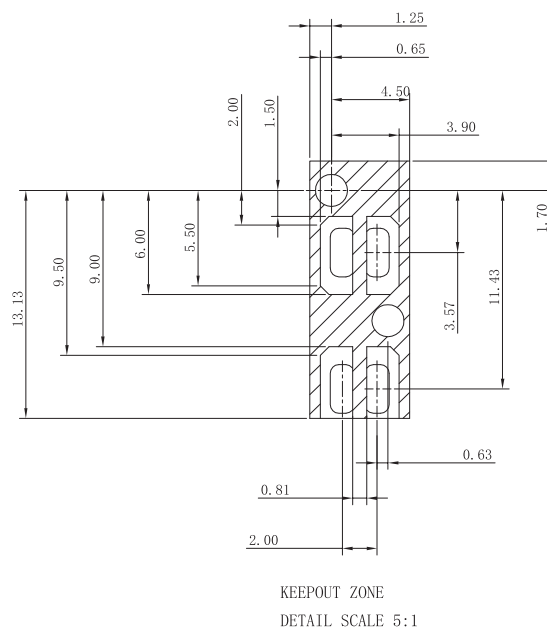
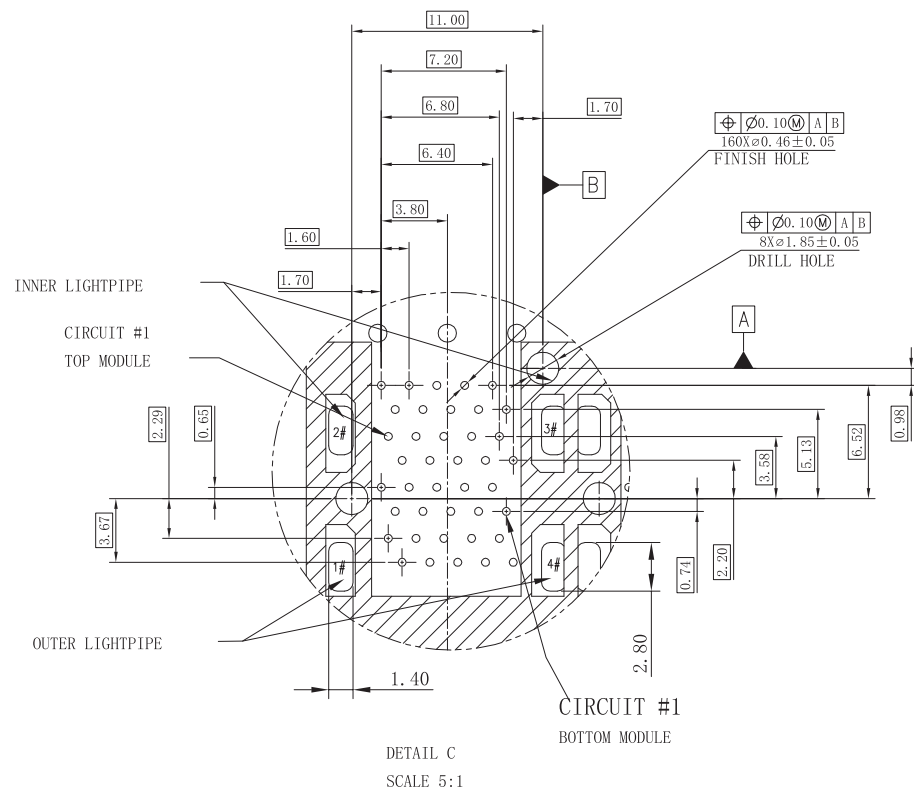
$.xx \pm 0.25$   
 $.xxx \pm 0.10$

DESIGN BY:  
Sunny.Xu

TEL: +86 400 1048 018

WEB: [WWW.WOHU-TEK.COM](http://WWW.WOHU-TEK.COM)

SC02



RoHS Compliant

**VOOHU** 苏州沃虎电子科技有限公司  
Su Zhou Voohu Electronic Tech.Co.Ltd

TITLE:  
SFP 2X4 CONNECTOR

SIZE  
A4

UNITS  
MM[INCH]

GENERAL TOLERANCES  
UNLESS SPECIFIED

APPROVED BY:  
Geoffrey.Song

PART NO.:  
WH10705524D007

SCALE  
1:1

REV  
A0

$x \pm 0.35$   
 $x^\circ \pm 3.0^\circ$

CHECKED BY:  
Elvis.Song

REMARK:  
GOLD PLATING 15u"

SHEET  
4/4



$.xx \pm 0.25$   
 $.xxx \pm 0.10$

DESIGN BY:  
Sunny.Xu

TEL: +86 400 1048 018

WEB: [WWW.WOHU-TEK.COM](http://WWW.WOHU-TEK.COM)